

An Architecture for Heterogeneous Federated Mediators

Dong Cheng and Nacer Boudjlida

LORIA-University Henri Poincaré Nancy 1
BP 239, 54506 Vandoeuvre Lès Nancy CEDEX(F)
Email: cheng,nacer@loria.fr

Abstract. This paper describes a heterogeneous federated mediators architecture to support querying and cooperation activities. In a lot of situations, the data and program were recorded by different persons, at different times, in different languages, on different fields. All the difference makes the information systems' heterogeneity. The mediation services are expected to play an important role in helping automated processes to access heterogeneous information. They are not Yes/No answers from the mediator, when no single object meets the search criteria, they may be cooperative answers to make a composite answer. In this paper we introduce a mediator-based logical architecture and its implementation.

1. Introduction

The propagation of the network has led to increasing need for interoperability between heterogeneous systems and services. These latest developments in data network domain are new challenges for interoperability technology, as attested by the tremendous work about Semantic Web [1]. However, in this work we intend to define an approach where heterogeneous systems may work together in a context of semantic queries. In this condition, we must match the information that was created by different programmers, at different times, in different languages, and all these things may be described in different *knowledge representation technologies*. Examples of applications of our work may be searching for *Web Services* that offer given functions, searching for a component in the context of component-based design and component-based programming, searching for a business partner with a given expertise, looking for an employee whose records and expertise satisfy a given position profile...

In this paper, we highlight a *Composite Answer* approach in heterogeneous environment where systems maybe record the information in different knowledge representation technologies. A significant originality of our approach resides in the

type of answers we aim at providing. Indeed, when there is no unique entity to satisfy the search criteria, the systems attempt to determine a composite answer that satisfies the criteria. Possibly heterogeneous systems may cooperate in the query evaluation process and in the answer composition process. These systems are viewed as a federation.

We are exploring alternative architecture, component and mechanisms to transparently federate such types of systems or services. This paper reports on a first experimentation focusing on the architecture itself. The presentation is structured as follows. In section 2 we briefly review the conceptual federated mediator-based architecture, and the concepts of composite answers in this architecture. In section 3, we describe an implementation and the physical architecture. Conclusions and remarks are in section 4.

2. A Review of Mediation Architecture

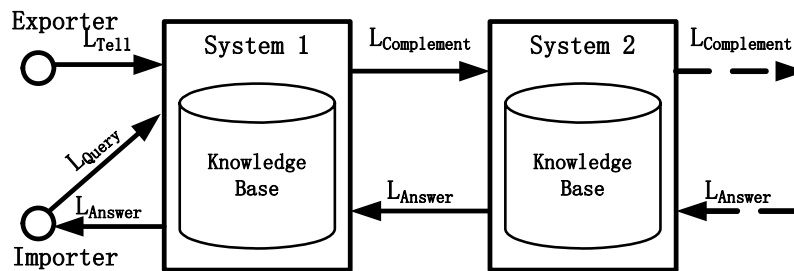


Fig. 1 The Mediator-based Architecture

In our work a mediator-based architecture has been adopted and is described in [7]. It is a dynamic discovery of services or capabilities an “entity” offers. It is very similar to the notion of *discovery agency* in the Web services architecture. In this architecture, an “entity”, called *exporter*, publishes (*tells*) its capabilities at one or more mediators sites (see figure 1). Entities, called *importers*, send requests (*queries*) to the mediator asking for exporters fitted with a given set of capabilities.

Several approaches, which are mediator-based, i.e. they are distributed and intelligent production systems, have been proposed over the last decade. A single Mediator is designed to offer an adequate level of decision-making integration, it takes into account the effort needed for the integration of heterogeneous computer systems [8]. The Conflict Resolution Environment for Autonomous Mediation (CREAM) system has been implemented, it provides various user groups with an integrated and collaborative facility to achieve semantic interoperability among participating heterogeneous information sources [9]. The KRAFT (Knowledge Reuse And Fusion/Transformation) architecture provides a generic infrastructure for knowledge management applications. It supports virtual organization using mediator

agents [10]. When it was applied to business-to-business electronic commerce, the mediators allow partners to exchange rich business information. As online travel agent application, a nature of competition in electronic markets, when it gets a customer's travel requirements to reservation system, envision this hypothetical system designed for a group of airlines all of whom serve national routes. Consider what might occur if that system was extended to include international airlines and foreign routes. These travel requirements could be easily satisfied by one travel agent in federated mediators.

In federated mediators, a cooperation environment, we can see the query as being addressed to "the union" of the federated mediators' knowledge bases. Concretely, this union is explored from "near to near" within the federation, that means from a mediator to another. Satisfying the query falls into different cases [7]:

- Case1: There exist exporters that exactly satisfy the query;
- Case2: There exist exporters that fully satisfy the query, but their capabilities are wider than those requested;
- Case3: No single exporter fully satisfies the query, but when "combining" or composing capabilities from different exporters, one can fully satisfy the query;
- Case4: Neither a single exporter nor multiple exporters satisfy the query, but there exist some exporters that partly satisfy the query;
- Case5: No single exporter nor several exporters fully or partly satisfy the query.

One notices, that cases 3 and 4 are cases where a composite answer is re-turned. In the case 4, we have to determine "what is missing?" Complement Concept, to the individuals to satisfy Q , which means to determine what part of the query is not satisfied by the found individuals. Furthermore, in these cases 2, 3 and 4, we need to notice "what is superfluous?"

An approach to find out "the best" answer was proposed using Description Logics [11]. The determination of the complement is based on the subsumption relationship using a *Normalize-Compare* process. The implementation of this process uses an array of Boolean (called "Table Of Test" further) to record the results of the subsumption relationship evaluation. In the figure 2, $C_1, C_2, C_3, \dots, C_n$ denote the query concept under its normal form and $D_1, D_2, D_3, \dots, D_m$ denotes the concepts "known from" the mediators, i.e. every D_j has to be viewed under its normal form $D_j^1, D_j^2, \dots, D_j^n$.

Then $TableOfTest[D_j, C_i] = \text{true}$ means that $D_j^i \sqsubseteq C_i$. When the value re-turned by the function $Subsumes(C, D_j)$ is "false" (i.e. the concept D_j does not fully satisfy the concept C), therefore we need to determine a possible complement of D_j relatively to C . Using the Table Of Test it is easy to get the complement of the concept D_j relatively to the concept C :

$Comp(C, D_j) = \overline{and_{k=1}^r C_k | TableOfTest[D_j, C_k]} = false$. That means that the complement is given by the conjunction of all the atomic concepts for which the corresponding values in the “Table Of Test” are “false”.

The composition of the truth values determines the cases of satisfaction. Consider a table $ORoD[1..n]$ as $ORoD[i] = \bigvee_{j=1}^m T[D_j, C_i]$. $ORoD[i] = true$ means that the concept C_i is satisfied by at least a D_k . If the conjunction of the values of $ORoD$,

	C_1	C_2	...	C_n		
D_1	False	False	...	True		
D_2	False	True	...	True		
...		
D_m	False	False	...	False	ORoS	ANDoS
ORoD	False	True	...	True	True	False

Fig. 2 The “Table Of Test”

noted $ANDoS$, is true (i.e. $\bigwedge_{i=1}^n ORoD[i] = True$), it means that all the C_i s are satisfied and therefore the query. When $ANDoS$ is false, the logical disjunction of the values of $ORoD$, noted $ORoS$, enables to determine a possible partial satisfaction: if $ORoS = \bigvee_{i=1}^n ORoD[i] = True$, it means that there exist some C_k that are satisfied. If both $ORoS$ and $ANDoS$ are false then no atomic concept D_j^k ($j \in 1..m$) satisfies a C_i .

For example, a formulaic query of travel requirement is in Description Logics.

$$\begin{aligned}
 Q \doteq & \text{(and TRAVEL} & C_1 \\
 & \text{(all depart NANCY/FRANCE)} & C_2 \\
 & \text{(all arrive WUHAN/CHINA)} & C_3 \\
 & \text{(some step NANCY/FRANCE)} & C_4 \\
 & \text{(some step WUHAN/CHINA))} & C_5
 \end{aligned}$$

It exists a mediator system 1, it well knows all routes in France and some international airlines. So it maybe finds a route as:

$$\begin{aligned}
 D_1 \doteq & \text{(and TRAVEL} & D_1^1 \sqsubseteq C_1 \\
 & \text{(all depart NANCY/FRANCE)} & D_1^2 \sqsubseteq C_2 \\
 & \text{(all arrive BEIJING/CHINA)} & D_1^3 \not\sqsubseteq C \\
 & \text{(some step NANCY/FRANCE)} & D_1^4 \sqsubseteq C_4 \\
 & \text{(some step PARIS/FRANCE)} & D_1^5 \not\sqsubseteq C \\
 & \text{(some step BEIJING/CHINA))} & D_1^6 \not\sqsubseteq C
 \end{aligned}$$

System 1 does not know any route in China, this travel requirement can't be fully satisfied. But we can find another mediator system 2, it well knows all routes in China. So it easy to find a route as:

$$\begin{aligned}
 D_2 \doteq & \text{(and TRAVEL} & D_2^1 \sqsubseteq C_1 \\
 & \text{(all depart BEIJING/CHINA)} & D_2^2 \not\sqsubseteq C \\
 & \text{(all arrive WUHAN/CHINA)} & D_2^3 \sqsubseteq C_3 \\
 & \text{(some step BEIJING/CHINA)} & D_2^4 \not\sqsubseteq C \\
 & \text{(some step WUHAN/CHINA))} & D_2^5 \sqsubseteq C_5
 \end{aligned}$$

We put the D_1 and D_2 into a *Table Of Test*. We get $ANDoS=True$, it means that this travel requirement can be fully satisfied by a composite answer of D_1 in system 1 and D_2 in system 2.

	C_1	C_2	C_3	C_4	C_5		
D_1	True	True	False	True	False		
D_2	True	False	True	False	True	ORoS	ANDoS
ORoD	True	True	True	True	True	True	True

3. Implementation and Architecture

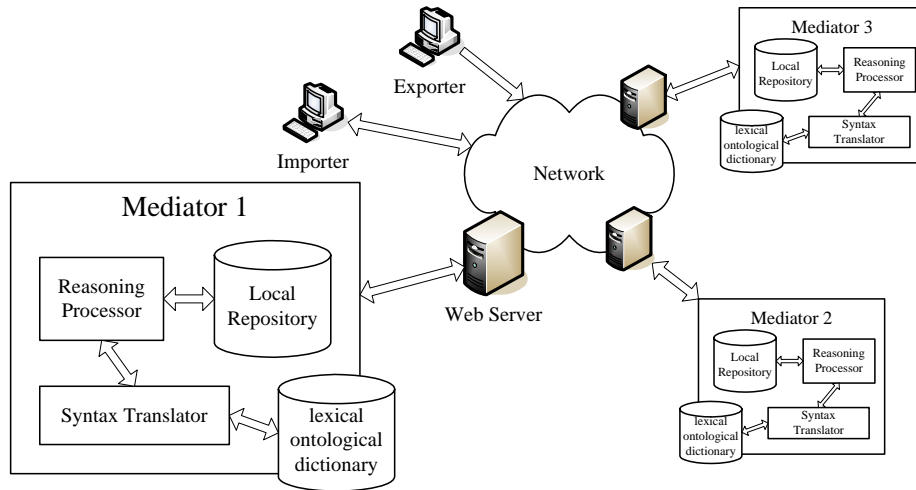


Fig. 3 The Layered Mediator Architecture

An experimental platform has been developed in *Java* where some services, like testing the subsumption relationship, determining the complement concept, and making a composite answer, have been implemented. As the drawing in figure 1, the federated mediators work in distributed and heterogeneous environment. The federated mediators architecture conforms to the *Reference Model for Open Distributed Processing*(RM-ODP). As shown in figure 3, the mediator architecture consists of three main parts: a local repository, a reasoning processor, a syntax translation.

In this implementation, we accept the *Description Logical* language *AL-* to reason and represent knowledge. It is used to represent the entity's "capability" in the local repository, and *Java* objects of *AL-* are used in all algorithms implementation. All services were implemented in a *Description Logic* reasoning processor, using the approaches and the algorithms that were outlined in the previous section.

3.1 The export sketch and inter-action

The *exporter* sends its capability description in *AL-* to the *Reasoning Processor*, as showed in figure 4. In this situation, *exporter* accesses the Mediator server through a *Web Server CGI* program, such as “classical” Web client/server architecture. The servers accept the *AL-* concepts written in *DAML+OIL*, an ontology language in *XML* [16]. The *AL-* concepts are encoded in *DAML+OIL*, then this *DAML+OIL* text is transmitted to the *Web Server's* URL. The *CGI* program may manage the export/import task. It uses the *Syntax Translator* to translate the *DAML+OIL* text into the *AL- concept* object. Then it puts the *concept* object into the *Reasoning Processor*. The *Reasoning Processor* uses the *Classification* approach to add this *concept* into the knowledge hierarchy (*TBox* and *ABox*) in the local repository.

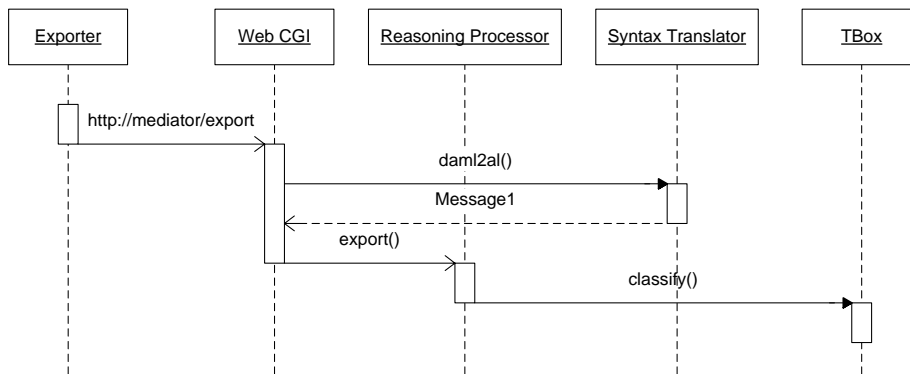


Fig. 4 The UML Sequence of Export Process

3.2 The import sketch and inter-action

The *Reasoning Processor* processes the query input from *Importer* like the process of *Exporter's* capability concept, as showed in figure 5. Then this normalized query concept is put into a *TBox* object. The algorithms in last section are implemented in the *TBox* class. The services' result outputs are also encoded in *DAML+OIL. XML* is also used to exchange information and concepts between the mediators when mediators' cooperation is needed. In *Composite Answer Situation Case 3* and 4, we need transmit the *complement concept* to the service partners. The *Web CGI* program makes a new *Import* on complement concept to partner server, as we discussed in section 2. Moreover, we deliberately ignored the search of the actual *individuals* (*ABox*) that satisfy a query, i.e. in the current implementation, only *TBoxes* are considered.

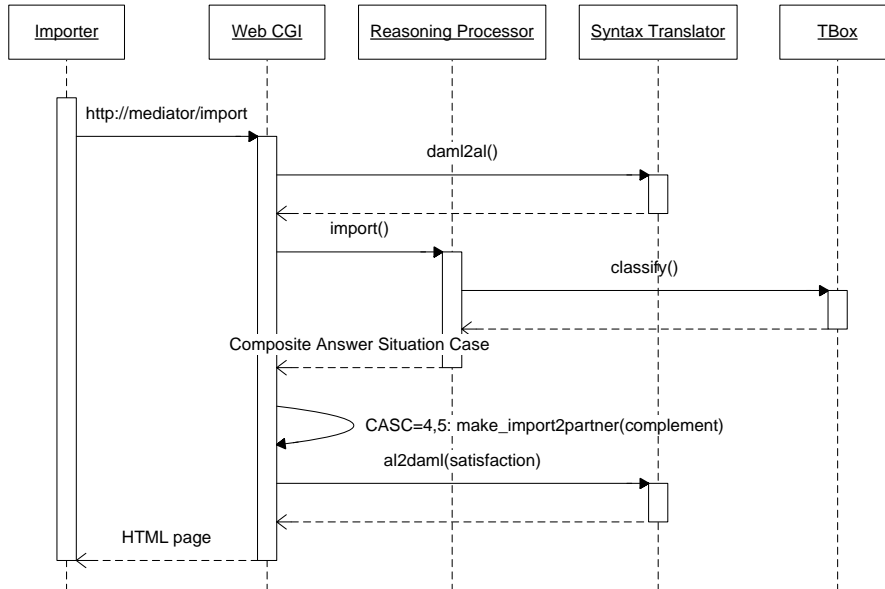


Fig. 5 The UML Sequence of Import Process

4. Conclusion Remarks

The federated mediators is a heterogeneous environment, it means different hardware and software, different knowledge representation systems. Thanks to W3C's work, it is possible to communicate between heterogeneous hardware and software by the family of standard from W3C (as *XML*, *SOAP*, *WSDL*, *OWL*, *Web Services*, *Semantic Web*, etc.)

The *Syntax Translator* may translate the *AL*- concept object to multiple knowledge representation languages in different message format. Which language will be accepted by federated mediator server, *DAML+OIL* or *OWL*? Which communication standards will be accepted, *SMTP* or *HTTP*? etc. The translator may read the necessary information from mediator server's a description in *WSDL*.

Complete semantic interchange is a hard problem between heterogeneous knowledge representation systems. In this work, we did not address semantic translation between any knowledge representation languages. The *Syntax translator* is a limited translator on semantic query, and only work at the syntax level. We see in last section, the *Complement Concept* is under a conjunctive form: $C = (\text{and } C_1, C_2, \dots, C_n)$. Each C_i is an *atomic concept* where each *atomic concept* is identified by a

term. The *term* is supposed to exist in a common lexical ontological dictionary (such as WordNet[13], EuroWordNet[4]). Moreover, we suppose facilities for mapping between terms. (Some term mapping approaches in lexical level are described [6]). In our work, heterogeneous systems cooperation thanks to the *complement* concept which is under the simplest form, *conjunction*. The conjunctive form is adopted in most knowledge representation languages, so the *complement concept* may be understood by the other partner systems. So these systems may be in different *knowledge representation* languages.

From the experimental platform, we believe that heterogeneous systems may interoperate by virtue of composite answer approach. We believe that the hard problems do not go away even if we solve low-level issues such as natural language analysis, complex term mapping, and ontologies integration. Further, we suggest that the root causes can be understood better in terms of *complement*.

In the future, based on our initial experience on limited heterogeneous knowledge representation technology and common mathematical background of heterogeneous knowledge representation technology [21], two interrelated approaches paid attentions to our work. The first is to find some limited translation approaches between any two knowledge representation languages. The second is to measure the mismatch, then describe it in a common knowledge structure, and find the algorithm to get the “best” composite answer.

References

1. W3C: Semantic Web (2003) <http://www.w3.org/2001/sw>.
2. Rahm, E., Bernstein, P.A.: A survey of approaches to automatic schema matching. VLDB Journal: Very Large Data Bases 10 (2001) 334–350
3. Garlan, D., Allen, R., Ockerbloom, J.: Architectural mismatch, or, why it’s hard to build systems out of existing parts. In: Proceedings of the 17th International Conference on Software Engineering, Seattle, Washington (1995) 179–185
4. Piek, V.: Eurowordnet: Amultilingual database with lexical semantic networks. EuroWordNet General Document 3 (1999)
5. Ahrens, K., Chung, S.F., Huang, C.R.: Conceptual metaphors: Ontology-based representation and corpora driven mapping principles. In John Barnden, Sheila Glas-bey, M.L., Wallington, A., eds.: Proceedings of the ACL 2003 Workshop on the Lexicon and Figurative Language. (2003) 35–41
6. Niles, I., Pease, A.: Linking lexicons and ontologies: Mapping wordnet to the suggested upper merged ontology. In: Proceedings of the IEEE International Conference on Information and Knowledge Engineering. (2003) 412–416
7. Boudjlida, N.: AMediator-Based Architecture for Capability Management. In Hamza, M., ed.: Proceedings of the 6th International Conference on Software Engineering and Applications, SEA 2002, MIT, Cambridge, MA (2002) 45–50
8. H.K. Tonshoff H.K., I. Seilonen, G.T., P.Leitado: Amediator-based approach for decentralised production planning, scheduling and monitoring. Proceedings of CIRP International Seminar on Intelligent Computation in Manufacturing Engineering (2000) 113–118

9. Sudha Ram, J.P., Hwang, Y.: Cream: Amediator based environment for modelling and accessing distributed information on the web. In: Nineteenth British National Conference on Database(BNCOD2002). (2002) 58–61
10. Preece, A.: Amediator-based infrastructure for virtual organisations. In Agents-2001 Workshop on Intelligent Agents in B2B E-Commerce (2001)
11. Cheng, D., Nacer, B.: Federated mediators for query composite answers. In: 6th International Conference on Enterprise Information Systems -ICEIS'2004, Porto, Portugal. Volume 4. (2004) 170–175
12. Pinto, H., Prez, A., Martins, J.: Some issues on ontology integration. In: Proceedings of the IJCAI-99 workshop on Ontologies and Problem-Solving Methods(KRR5). (1999) In [18], 7–1 – 7–12
13. Miller, G.A., al.: Wordnet 2.0 (2003) <http://www.cogsci.princeton.edu/wn/>.
14. UDDI.org: Uddi: Universal description, discovery and integration. Technical White Paper (2003) (<http://uddi.org>).
15. Beatty, J., al.: Web Services Dynamic Discovery (WS-Discovery) Specification. Microsoft, BEA, Canon, Inc and Intel. (2004) <http://msdn.microsoft.com/ws/2004/02/discovery>.
16. Horrocks, I.: DAML+OIL: a description logic for the semantic web. IEEE Data Engineering Bulletin 25 (2002) 4–9
17. Randall Davis, H.S., Szolovits, P.: What is a knowledge representation? AI Magazine 14 (1993) 1993
18. DL-org: Description logics (2003) <http://dl.kr.org/>.
19. Kifer, M., Lausen, G., Wu, J.: Logical foundations of object-oriented and frame-based languages. Journal of the Association for Computing Machinery 42 (1995) 741–843
20. Chein, M., Genest, D.: Cgs applications: Where are we 7 years after the first iccs? In Ganter, B., W.Mineau, G., eds.: Conceptual Structures: Logical, Linguistic, and Computational Issues. Volume 1867., Darmstadt, Germany, ICCS 2000, Springer (2000) 127–139
21. Sowa, J.F.: Mathematical background of knowledge representation (2003) <http://www.jfsowa.com/logic/math.htm>.
22. Amati, G., Ounis, I.: Conceptual graphs and first order logic. The Computer Journal 43 (2000) 1–1