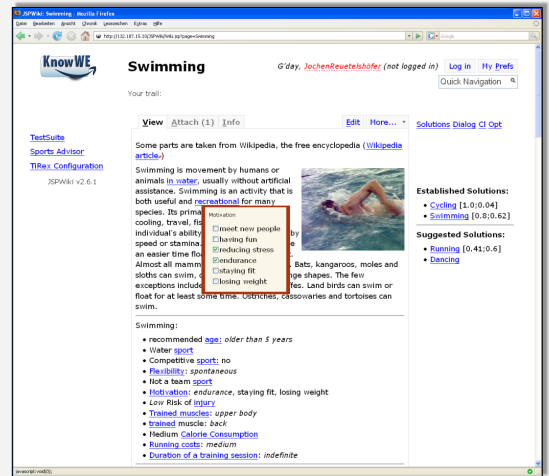


Overview

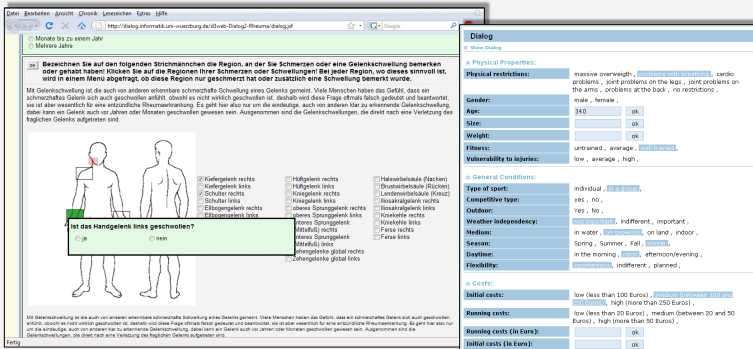
KnowWE is a semantic wiki designed for the integration of components for diagnostic problem-solving. To support the development of (diagnostic) knowledge systems, components for formalization (markup, editors), for reasoning (rules, decision-trees, fault models) and for executing/testing have been implemented. The goal is to combine the strength of knowledge-based systems with the ease of Wikis to support collaborative knowledge engineering.

KnowWE

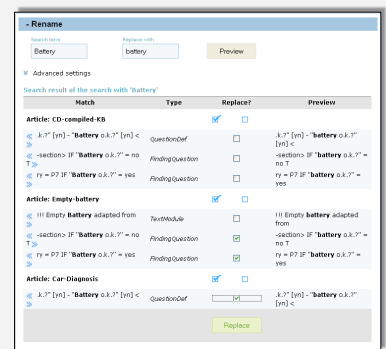
- Wiki-based workflow: collaborative fast and simple editing with immediate feedback.
- Combination of unformalized (startup documents) and (semi-) formalized knowledge.
- Problem-solving knowledge is instantly compiled into a knowledge base after saving a wiki page. It can be tested via starting test cases in user interviews.



User Interviews



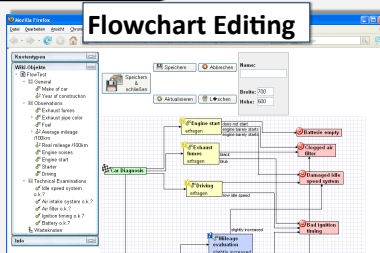
Refactoring



Markups and Editors

- Wiki editing (proprietary markup)
- Additional editors
 - Table/Inline-editing
 - Visual editors
 - Syntax highlighting
 - Verbose syntax-check
 - Integrated refactoring tools
- Unit-test-cases
- Extensibility

Flowchart Editing



Textual Editing

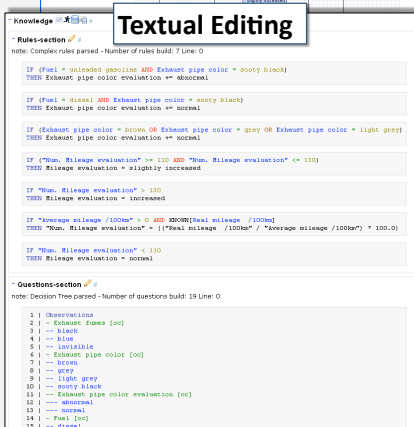
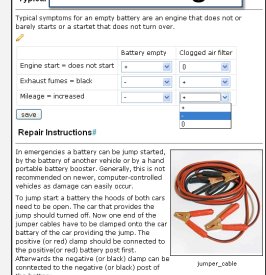


Table Editing



d3web Engine

- Open-source reasoning for diagnostic problem-solving, e.g. heuristic scoring rules, heuristic decision trees, set-covering fault models
- Implemented as KnowWE extension
- Compatible knowledge interchange with d3web.KnowME

Architecture

